

# eci Insider

A PRODUCTION OF eciGROUP



## GETTYSBURG TOUR CENTER

APRIL 26, 2024



# eciInsider

APRIL 26, 2024

IN THIS ISSUE:

ANNUAL SUMMER PICNIC

Page 3

EMPLOYEE EPOTLIGHT

Page 4

GETTYSBURG TOUR  
CENTER

Page 5

NINJA CHALLENGE USA

Page 8

THADDEUS STEVENS  
LENARD BLD

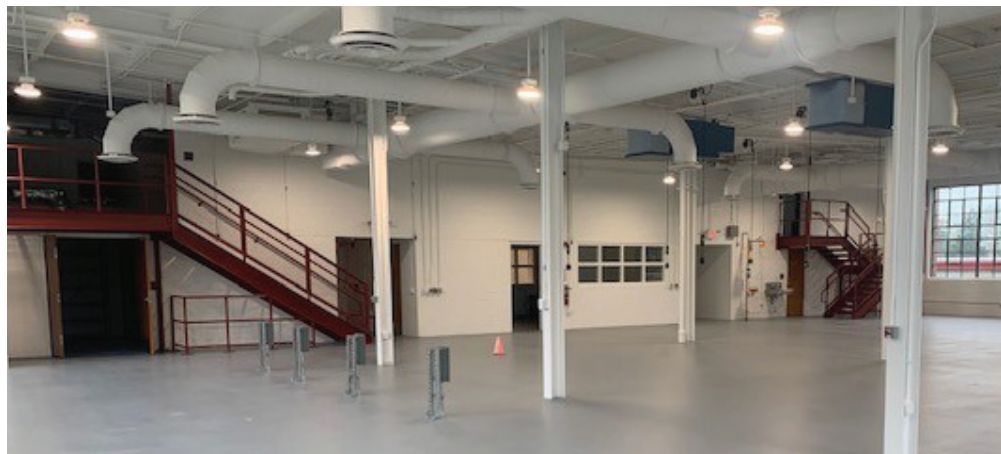
Page 9

RECENTLY WON JOBS

Page 10

eciLegacy

Page 11



# TAKE ME OUT TO THE BALL GAME

## ANNUAL SUMMER PICNIC

SUNDAY JUNE 23, 2024  
12PM GATES | 1PM GAME  
CLASSIC BALLPARK FOOD  
12PM - 2PM



VS



### Want a chance to participate?

Include the name of willing participants  
in your RSVP to be entered in a drawing  
for a chance to take part in the action!

*(activities TBD, previous examples were running  
the bases, throwing the first pitch, etc.)*

RSVP NO LATER THAN MAY 13, 2024

Scan here to RSVP  
or email Heidi  
[heidi.sauble@eciGroup.us](mailto:heidi.sauble@eciGroup.us)







## eciGroup

### Employee Spotlight

# Ally Avery

#### **What was your starting position, and with which company?**

My starting position is an Administrative assistant, with eciGroup

#### **What is your favorite thing about your job?**

My favorite thing about my job is working with the people I have grown up with since I was a young kid. They have been like family to me my entire life. I also like how I get to follow in my dad's footsteps and work with him.

#### **What are your hobbies?**

When I was in high school, cheer was a huge part of my life for 12 years. I also love traveling the world and exploring new things. You can also find me outdoors a lot, whether it's at the beach or in the Smokey Mountains.

#### **What is something about you that your co-workers might not know?**

Something you might not know about me is I love cups lol, I have an entire cup cabinet at home filled with my water bottles from Starbucks or dunkin. I always get told by my dad I have to get rid of some but that's not going to happen

#### **If you were stranded on a deserted island with only one thing, what would you take?**

I would probably take a lighter. I could catch my own food, I would just need a lighter to get things started. Its also a good use of light.





## GETTYSBURG TOUR CENTER

### Completed Project

Gettysburg, Pennsylvania

4,300 sq ft | 2.9 million

The idea of developing a tour centered on one of the most monumental civil war battles in history was conceived on a golf course by several entrepreneurs on a summer day in the 1950s. Gettysburg Tours, Inc. started giving battlefield tours to tourists in the 1950s in Mercedes van-style vehicles.

The business moved into a manufactured cabin structure in the 1960's which functioned very well as a hub of tourism for decades. While various additions over the years allowed for more square footage, the lack of a foundation and various other needs consistent with modern buildings led to the decision to raze the existing building to allow for a new structure in the same foot-print.



**Dustin Avery**  
*Estimator*



**Jeff Ulm**  
*Project Manager*



**Scott Farner**  
*Superintendent*



**Buchart Horn**  
*Architect*



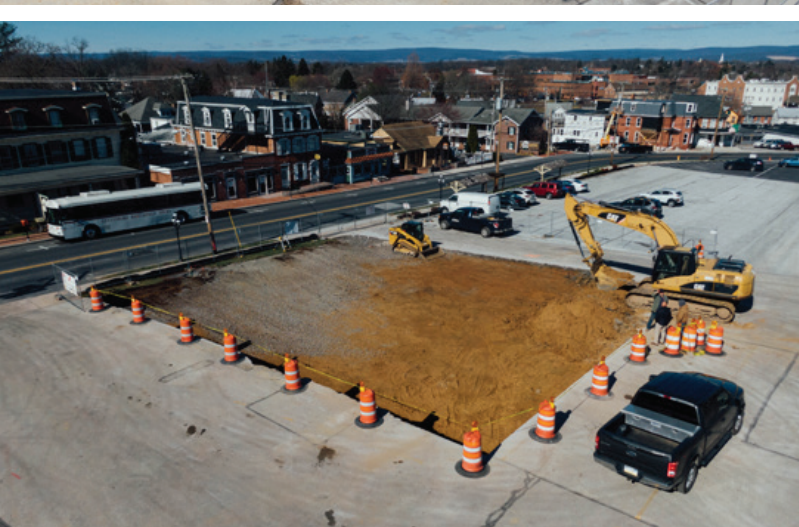




After operating in the same building for over 60 years, plans have been finalized for an upgrade to an iconic Gettysburg landmark. After several years of analysis and planning with Buchart Horn Architects, owner Felty Investments, LP was able to obtain the necessary permits to move forward with the project, selecting general contractor eciConstruction. The new building will have the benefits of more square footage, greater use of space, energy efficiency and handicapped visitor accessibility. The Gettysburg Tour Center has been the departure location for battlefield tours since the inception of the business in the 1950's.









## USA NINJA CHALLENGE RENOVATIONS

### Progress Update

Camp Hill, Pennsylvania

5000 sq ft | \$146,000

eciService will modify the building to accommodate USA Ninja Challenge, enlarging the entry area and installing a pass-through window in the front office for the front desk. Plywood walls 8' high will be installed in the new gym area. Interior areas will be painted in colors chosen by usa ninja challenge. The kitchen, part of the corridor, a section of the utility room, back office, and loft space will be removed to create more gym space. New high bay lighting will be installed, and the current stairs to the loft area will be removed. This project is being completed with special assistance from eciWireless.



**Eric Stouter**  
*Estimator & PM*



**Ken Shetron**  
*Superintendent*



**Dennis Hufnagle**  
*Electrician*



**Dave Bostic**  
*Supervisor*



**Dan Bier**  
*Plumber*



**Richard Gribble**  
*Architect*

## eciWireless



**Jeff Hawley**



**Kory Farrow**





# eciConstruction

## THADDEUS STEVENS LENARD BLDG.

Lancaster, Pennsylvania

22,000 sq ft | 2.4 million

eciConstruction recently completed this 22,000 square foot renovation of a vacant building on Thaddeus Stevens Campus in Lancaster, Pennsylvania.

This space has future plans to be used as a wood shop, classrooms, locker rooms and future commercial area for students and faculty.



**Justin Peachy**  
*Estimator*



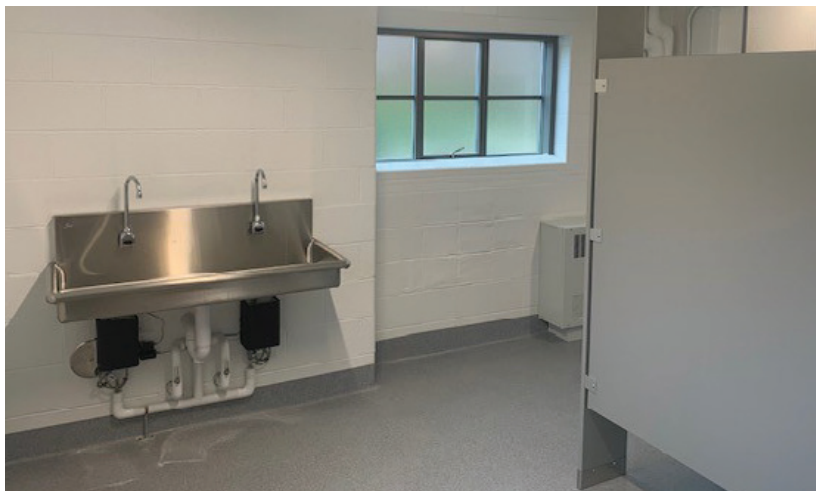
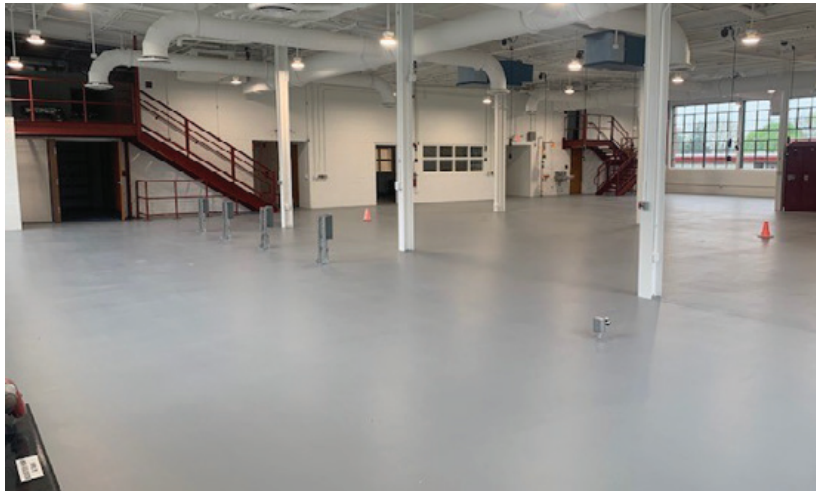
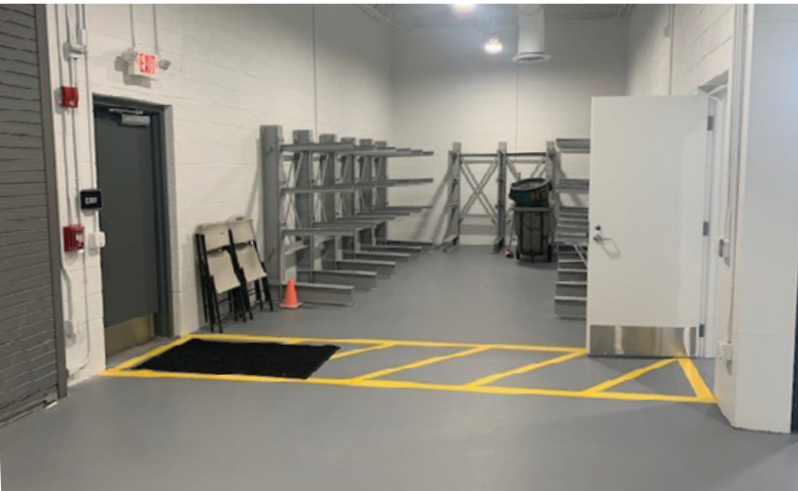
**Bill Witmer**  
*Project Manager*



**Fred Clark**  
*Superintendent*



**Marotta Main  
Architects**  
*Architect*





# eciConstruction

## RECENTLY AWARDED JOBS

### Lick Tower Building

Harrisburg, Pennsylvania



**Brandon Strum**  
*Estimator*



**Justin Peachey**  
*Estimator*



**Steve Lis**  
*Project Manager*



**Fred Clark**  
*Superintendent*

### Mechanicsburg Middle School Entry Replacement

Mechanicsburg, Pennsylvania



**Dustin Avery**  
*Estimator*



**Nick Yinger**  
*Estimator*



**Brian Imler**  
*Project Manager*



**Wayne Heefner**  
*Superintendent*

### Hanover Toyota Service & Rennovations

Hanover, Pennsylvania



**Kyle Goodyear**  
*Estimator*



**Steve Lis**  
*Project Manager*



**Jason Gutshall**  
*Superintendent*



# eciLegacy

A Blast From The Past

## 2021 CLOCK TOWERS APARTMENT ROOF LIFT





# FIND **eci** ON FACEBOOK

**eci**Group

[facebook.com/eciGroupDillsburg](https://facebook.com/eciGroupDillsburg)

**eci**Construction

[facebook.com/eciConstruction](https://facebook.com/eciConstruction)

**eci**Service

[facebook.com/eciService](https://facebook.com/eciService)

**eci**Wireless

[facebook.com/eciWireless](https://facebook.com/eciWireless)

**MidState**  
MECHANICAL ELECTRICAL

[facebook.com/MidStateME](https://facebook.com/MidStateME)

---

WANT TO BE FEATURED IN  
THE NEXT **eci**INSIDER?

email Kenzie with all your good news, big  
annoucments or anything that would make us smile!

[makenzie.cuthie@eciGroup.us](mailto:makenzie.cuthie@eciGroup.us)



# eciGroup

Paul B Hardware one of our material suppliers is providing a special discount to all eciGroup employees which includes all eci Affiliate companies. Instructions on how to use the coupon can be found on the coupon itself, it can be used several times during the offer period. A hard copy is not needed, a photo or electronic copy from a phone can be used as well.



**SAVE 7%  
ON ALL PURCHASES!**

**As an employee of ECI Group,  
you pay what your company pays  
from April 22 - 30, 2024.**

**How To Use:**

- Present this coupon at checkout.
- Pay with a personal payment method.
- Use without limit from April 22 - 30, 2024.
- Use on top of sales and product promotions.

*Terms: Unlimited use from April 22 - 30, 2024. Can be combined with other specials and offers. Cannot be combined with other coupons or used for Festool, SawStop, or PaulB gift cards. Must be a current employee of ECI Group. Valid at all PaulB Hardware locations.*



ECIDISCOUNT



*"The hardest thing is to live richly in the present without letting it be tainted out of fear for the future or regret for the past."*

*- Sylvia Plath*

## SUGGESTIONS

Remember, eciGroup is always looking for ways to improve! You can head out to our website and submit your comments or suggestions in the form at

[www.ecigroup.us/Contact](http://www.ecigroup.us/Contact)



**eci**Insider  
Experience. Commitment. Integrity.

124 West Church Street Dillsburg, PA 17019  
(717) 638-2000  
[ecigroup.us](http://ecigroup.us)